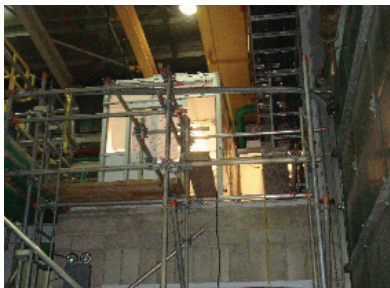




## INTEGRATED CLEANROOM & LABORATORY SOLUTIONS CONTRACTOR PROFILE

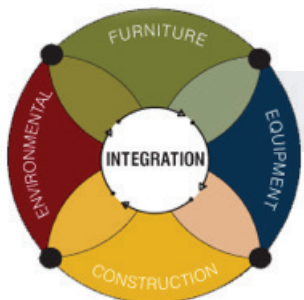


### Project Type: **Modular Waste Water Research Facility**

#### Project Scope:

Work included the turnkey supply and installation of a 200 square foot free standing self supporting floor mounted support structure to support the waste water research facility with fixed type all modular half height viewing barrier wall systems with integral product pass thru, chemical processing work stations, entry exit interlocked slider door systems, integral grid ceiling systems using "RSR" room side access Fan/HEPA modules, lights and exhaust system.

Facility includes integral electrical and data solutions.



### COMBINED ENGINEERING SOLUTIONS – ONE CREATIVE VISION

120 Terence Matthews Crescent, Unit F1, Kanata, Ontario K2M 0J1  
**Ottawa Tel #:** (613) 366-4984 **Toronto Tel #:** (416) 477-4984 **Fax #:** (613) 831-4966  
info@hepaireproducts.com

[www.hepaireproducts.com](http://www.hepaireproducts.com)